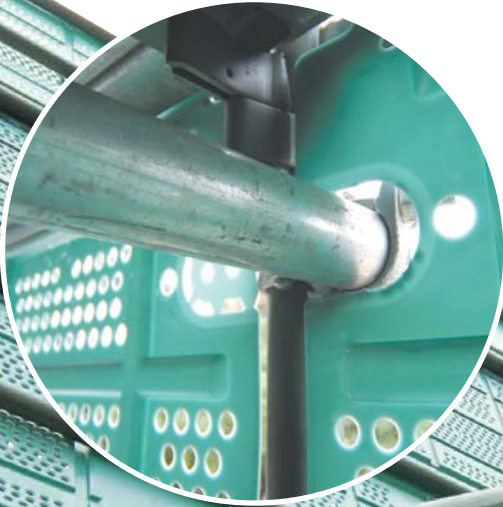


  
**smart**scaff

ScaffGuard

**The Smarter, Safer Choice**

Scaffold Safety System



## Smart, Safe Innovation

ScaffGuard is an innovative new scaffold safety system unlike any other. It was designed using the very latest manufacturing technology to meet the growing needs of the industry – producing scaffolding products that allow companies to work both smarter and safer.

Unlike other scaffolding systems, which use shade cloth or mesh, ScaffGuard containment panels are made of durable polypropylene. This means they have high impact resistance, as well as less wind loading due to their unique design. The system is safely installed from the working deck inside the scaffold with specially designed ties and wedges. And best of all, every component is reusable, so there's no wastage.

With a system like ScaffGuard™ available... is there any other choice?!



## ScaffGuard™ Containment Panels

### **Tough Polypropylene**

Tough and durable, will withstand high impacts.

### **Reduced Wind Loading**

Less wind loading on scaffold than shade cloth & mesh.

### **Safe to install**

Installed from inside the scaffold on the working deck.

### **Less Weight**

Easy handling as a 2.4m Scaffguard weighs only 7.2kg. This also means less load on the scaffold.

### **Reusable & Easy to Store**

ScaffGuards stack flat like dinner plates making for easy transportation and storage.

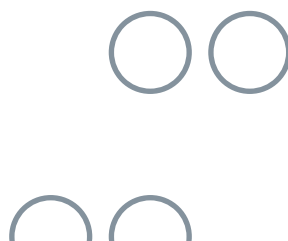
## Containment Size above Standard

### **Hole size smaller than required**

ScaffGuard uses a 14mm diameter hole to prevent debris from falling through the panel.

### **40% perforated**

Almost 40% of the surface area of the panel is perforated. This reduces wind loading and allows light to transfer to the work area.



# ScaffGuard™ Quick Fix

## Reusable T-lock to locate panel

Inserting the self locking T-lock holds the panel in place during erection and are easily removed for reuse.

## Cable ties for interlocking

Two cable ties are easily inserted from the front of the panel to interlock the panels together when used at the 2m level on a deck.

## Removal Bar

At all tie locations a raised bar lifts the cable tie from the surface of the panel to assist in easy cutting of the tie for removal.

## Additional tie points

There are numerous tie points to allow panels to be secured on scaffold laps and other non standard situations. Lap panels and end panels are also available.

# Scaffold Tie Facility

## Tie Hole Infill

To maintain the protection and integrity of panel, a tie hole infill can be used to fill a removed tie hole.

## Removable Tie Hole

ScaffGuard has an easy to remove tie hole which allows scaffold tube to be secured to both standards for scaffold ties.

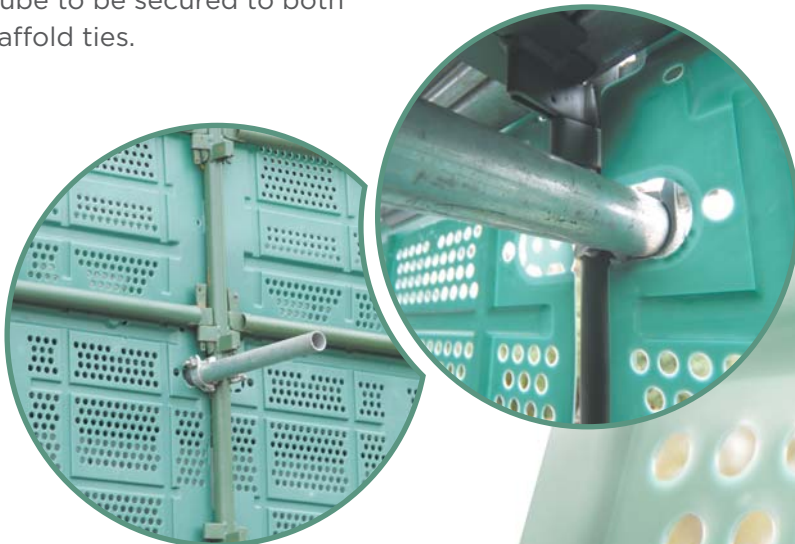
T-lock



Cable ties for interlocking



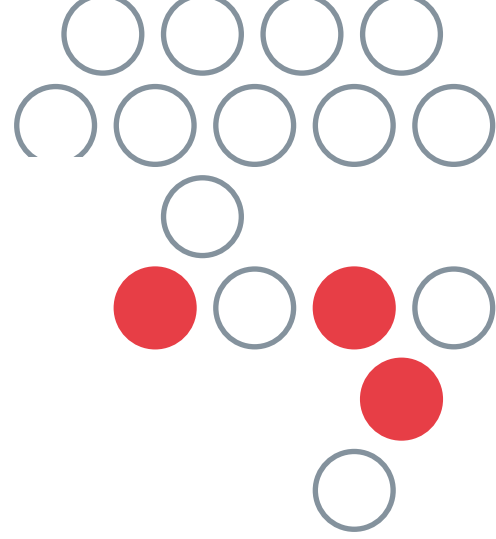
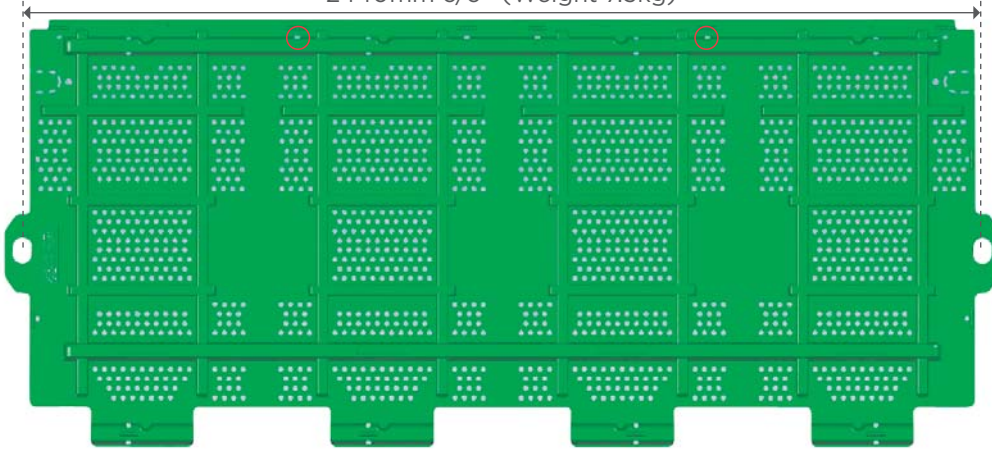
Tie Hole Infill



MADE IN AUSTRALIA

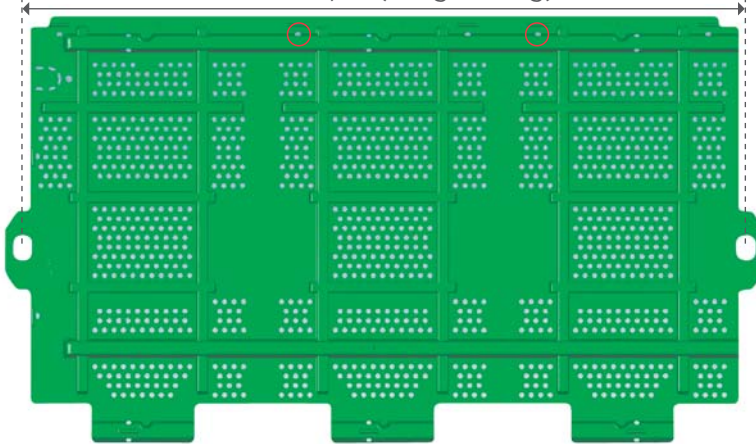
### ScaffGuard-24

2440mm c/c (Weight 7.3kg)



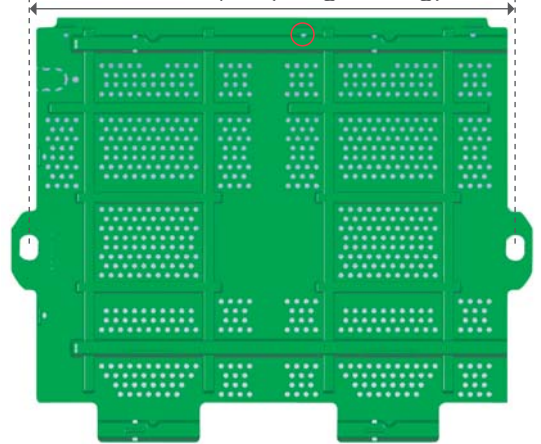
### ScaffGuard-18

1830mm c/c (Weight 5.5kg)



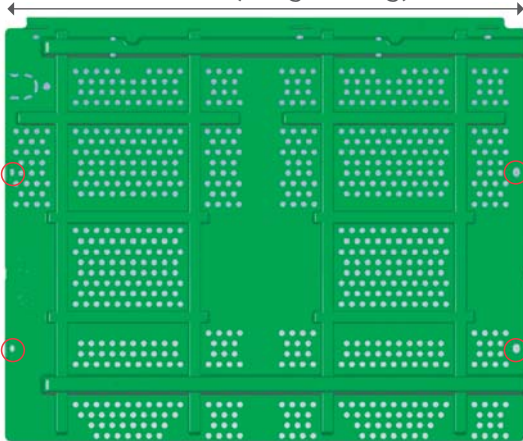
### ScaffGuard-12

1270mm c/c (Weight 3.8kg)



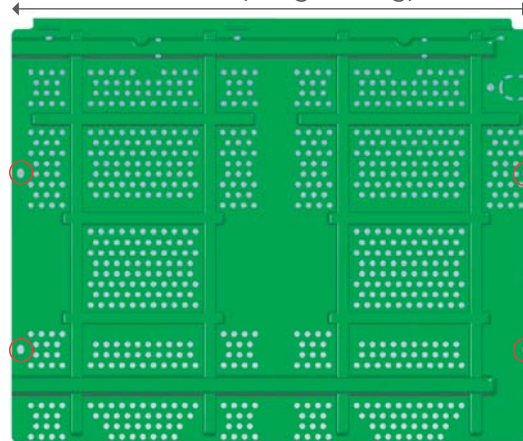
### ScaffGuard End Panel-LH

1195mm (Weight 3.4kg)



### ScaffGuard End Panel-RH

1195mm (Weight 3.4kg)



○ Recommended cable tie point to handrail.

  
smartscuff

[www.smartscuff.com.au](http://www.smartscuff.com.au)

Distributed by:

